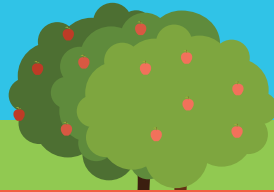


From Garden Gates to Dinner Plates

the ROAD to a
**COTTAGE
FOOD
BUSINESS**



1

Learn about the Illinois Cottage Food Law.

Visit web.extension.illinois.edu/cottage or contact your local Extension office for detailed information.



Any food or drink unless specified.

What foods can I sell?



2

Get an application.

Contact Crawford County Health Department at 618-544-8798 to request an application for cottage food vendors. Application fee is \$25



HEALTH DEPT

3

Get certified.

Take an ANSI approved Certified Food Protection Managers course. Visit <http://bit.ly/cottagefoodroad> for ANSI approved and accredited programs.



202 N. Christopher Blvd.
Robinson, IL 62454
618-544-8798
www.cchd.net

ILLINOIS
Extension
COLLEGE OF AGRICULTURAL, CONSUMER
& ENVIRONMENTAL SCIENCES



Research.

4

Use your own recipe for baked goods. For jams, jellies, preserves, fruit butters, acidified vegetables, tomato, and tomato products, find a tested recipe and the latest information on safe home canning at the National Center for Home Food Preservation: nchfp.uga.edu



Get ready.

5

Make sure to clean your kitchen and keep it clean. Don't allow pets in the kitchen while you are working, wash your hands, and make sure everything is clean and safe. Once you've tested your recipes, design a label and be sure to list the ingredients.



Develop a business plan.

6

Buy supplies and set up record keeping. Plan out how you will transport your goods. Design your display booth and placard. Visit web.extension.illinois.edu/cottage/labeling.cfm



Don't know how to use a water bath canner? Visit web.extension.illinois.edu/cottage/canning/why.cfm

Attend a University of Illinois Extension Cottage Foods Workshop.

These workshops help those who want to start a cottage food operation or anyone wanting to get a refresher on the current laws and safe practices. Call your local University of Illinois Extension office to find out about workshops scheduled. For office listings, visit: web.extension.illinois.edu/state/findoffice.cfm

You're in business!

7

Each county's local health department will have a list of farmers markets in the county. Contact your local farmers market manager to find out about any requirements and to get approved. The day of the market, check-in with the market manager for a location assignment, set-up and start selling!



ILLINOIS

Extension

COLLEGE OF AGRICULTURAL, CONSUMER & ENVIRONMENTAL SCIENCES

Crawford County Health Department
202 N. Christopher Blvd.
Robinson, IL 62454
618-544-8798

