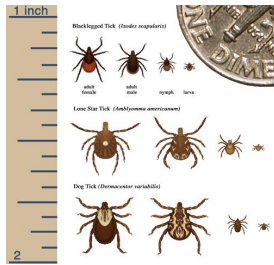


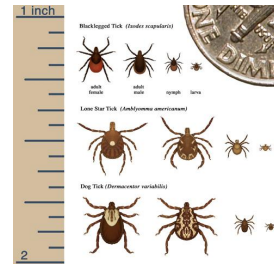
Tick Identification Card

Crawford County
Health Department
202 N. Bline Blvd.
Robinson, IL 62454
Phone: 618-544-8798
Website: www.cchd.net



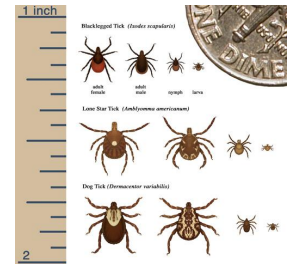
Tick Identification Card

Crawford County
Health Department
202 N. Bline Blvd.
Robinson, IL 62454
Phone: 618-544-8798
Website: www.cchd.net



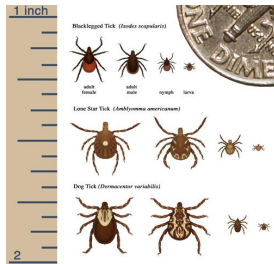
Tick Identification Card

Crawford County
Health Department
202 N. Bline Blvd.
Robinson, IL 62454
Phone: 618-544-8798
Website: www.cchd.net



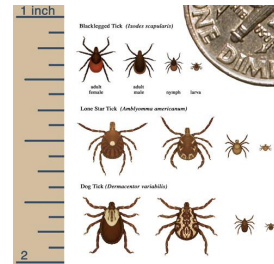
Tick Identification Card

Crawford County
Health Department
202 N. Bline Blvd.
Robinson, IL 62454
Phone: 618-544-8798
Website: www.cchd.net



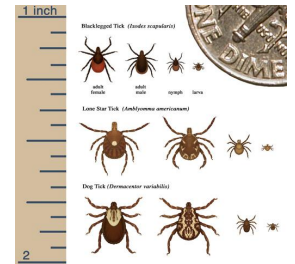
Tick Identification Card

Crawford County
Health Department
202 N. Bline Blvd.
Robinson, IL 62454
Phone: 618-544-8798
Website: www.cchd.net



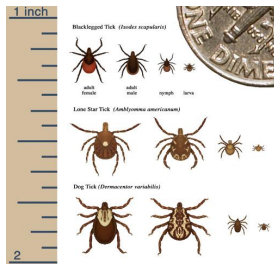
Tick Identification Card

Crawford County
Health Department
202 N. Bline Blvd.
Robinson, IL 62454
Phone: 618-544-8798
Website: www.cchd.net



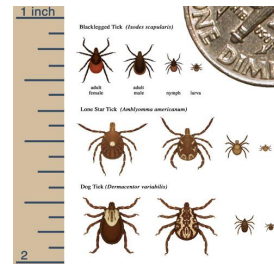
Tick Identification Card

Crawford County
Health Department
202 N. Bline Blvd.
Robinson, IL 62454
Phone: 618-544-8798
Website: www.cchd.net



Tick Identification Card

Crawford County
Health Department
202 N. Bline Blvd.
Robinson, IL 62454
Phone: 618-544-8798
Website: www.cchd.net



Tick Identification Card

Crawford County
Health Department
202 N. Bline Blvd.
Robinson, IL 62454
Phone: 618-544-8798
Website: www.cchd.net

